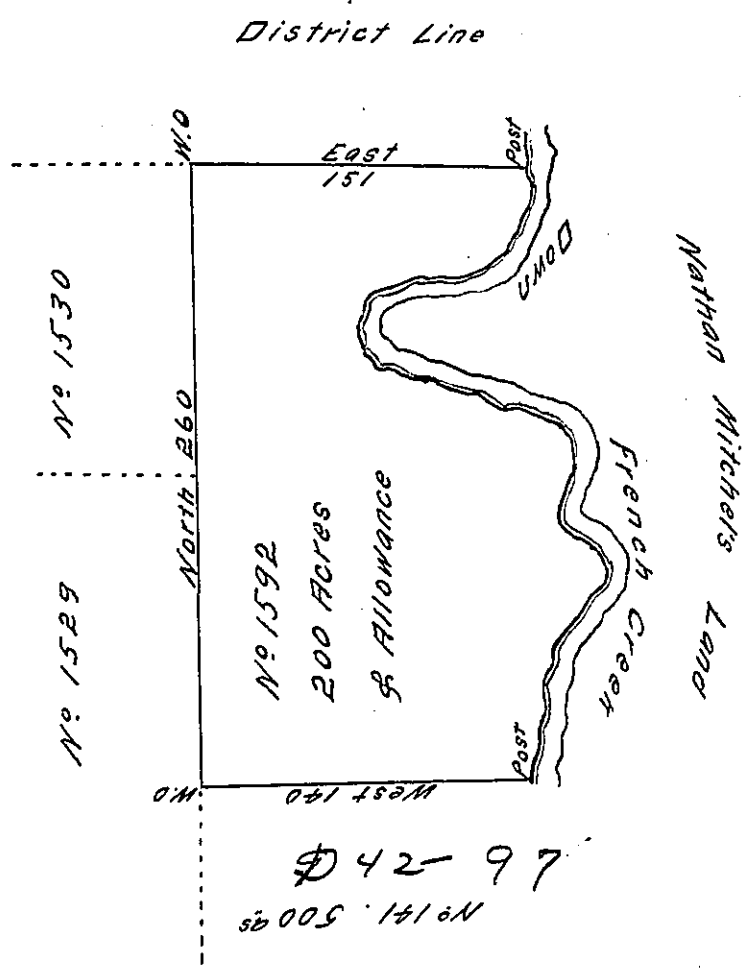


FORM NO 1.

Courses and Distances  
down French Creek

- South 33.5
- S 40 W 23.5
- S 75 W 25.5
- N 85 W 33.
- S 15 W 5.5
- S. 28 E 11.
- S 66 E 7.
- S 82 E 40.
- S 68 E 28
- S 32 E 10
- S 5 E 10
- S 36 W 35
- S 70 E 40
- S 15 E 13
- S 40 W 15.5
- S 70 W 32
- S 10 W. 10
- S 15 E 27
- S 20 W 28
- S 39 E. 14
- 441



Pursuant to an order of the Board of Property dated the 11<sup>th</sup> day of November 1808 Resurveyed the above described Tract of land for Samuel Cochran and Samuel Clendenin Containing 200 Acres and allowance for Roads &c. Situate on the West Side of French Creek Crawford County in the eighth Donation District No 1592 formerly Patented to John Spering a Soldier in the Pennsylvania line.

Certified P.

To James Miller D.S.  
 Samuel Cochran Esq<sup>r</sup> }  
 Surveyor Gen<sup>l</sup>

IN TESTIMONY that the above is a copy of the original remaining on file in the Department of Internal Affairs of Pennsylvania, made conformably to an Act of Assembly approved the 16th day of February, 1833, I have hereunto set my Hand and caused the Seal of said Department to be affixed at Harrisburg, this Twenty-fifth day of June 1908

Henry Howell  
 Secretary of Internal Affairs.